

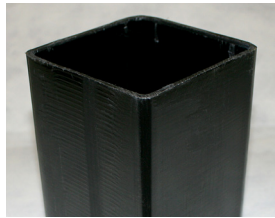


X9

ULTRA STRONG • ULTRA QUIET BOAT DOCK SYSTEM

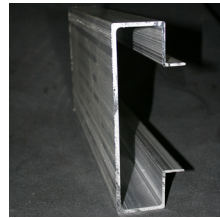
Full Polypropylene

Full Polypropylene Noise eliminating Post Singular bushing that provides full lateral wall contact.



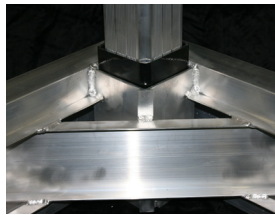
9 1/2" Main Frame Beam

9-1/2 inch Main Frame Beam that is 3/16" thick. It is Marine Grade 6061-T6 Aluminum. It is stronger in Torque, Span and Lateral Strength than any beam on the market in other 8, 9 or 10 inch main frame docks.



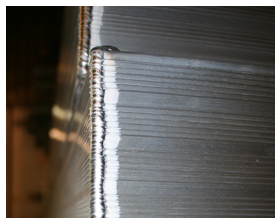
Interlocking Assembly

Interlocking structural assembly. Alumadock has designed the X9 with components that interlock and create a dock system capable of withstanding the most extreme marine environments.



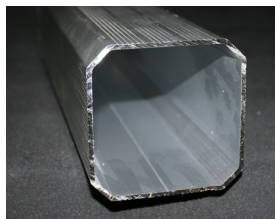
Certified Welders

American Welding Society Certified Welders. Alumadock uses state of the art welding equipment and our personnel are college graduate welders. Alumadock has the highest welding standards in the aluminum boat dock industry.



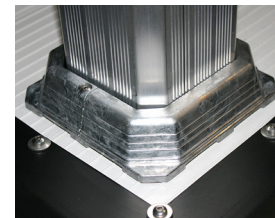
Octagonal Roof Post

Octagonal Roof Post - Alumadock 4x4 roof post are heavier and stronger than other dock builders. Each post has a full polypropylene bushing at the base and top. It eliminates diagonal bracing in almost all installs.



Noise Eliminating Hinge

Noise eliminating hinge - No more squeaking docks! Alumadock uses heavy duty hinge that employs a HDPE Bushing along the entire hinge. An unbeatable combination.



Detailed Trim

Custom cast caps surrounds each post to floor connection for a finished look.



Huck Magna Lok System

The Alcoa Magna Lok stainless steel fastening system is used to secure the main joints on the Alumadock main frame and post sockets. This is the strongest and most reliable blind fastening system in the world. It is the ANSWER to loosening and vibration challenges. Magna Lok fasteners are used on military vehicles and over the road freight equipment.



Permafloat Floatation

Alumadock uses Permafloat Floatation. These floats are heavy duty and have the thickest shell on the market. Alumadock uses a proprietary stainless steel J bolt to secure floats to the mainframe on the X9.

X9 BOAT DOCK SYSTEM

ULTRA STRONG • ULTRA QUIET



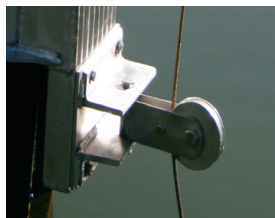
Heavy Duty 26 Gauge

X9 Roofing panels are Heavy Duty 26 gauge R panels. They are available in 19 colors and have a 40 year warranty. X9 Alumadock has a more finished look that any other dock on the market. Edge trim and underlayment are standard features versus other docks with an unfinished look.



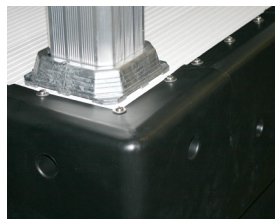
Ultra Duty Articulating Pulley

Winch System- Alumadock offers an Ultra Duty Articulating pulley system that follows the movement of the docking system. Our winches are NOT installed on the roof post of the dock. Alumadock winches are installed on an independent, heavy duty replacement component winch stand.



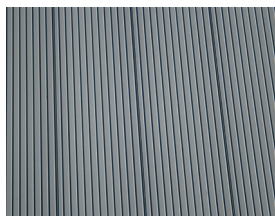
Anti-Mar Boat Cushion

Alumadock Anti-Mar boat cushion. We offer full corner protection for your watercraft and optional full cushioning along the entire length of your dock.



Decking Options

Alumadock X9 Decking Options • Gutterdeck aluminum decking in powder coated Gray or Almond, IPE hardwood, PVC or the decking of your choice.



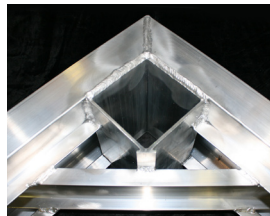
Multiple Configurations

Alumadock X9 offers multiple configurations to build the dock of your dreams. Whether it be a Gable Roof, Hip Roof, Sundeck or Sundeck Combination, X9 is the answer to your needs.



Revolutionary Design

Alumadock revolutionized the aluminum boat dock industry in 2001 by designing and building the first aluminum dock utilizing the post and socket design.



Delivery and Dock Kits

On time delivery is guaranteed by ALUMADOCK'S in-house shipping fleet. Installation of your dock is handled by our employees or your local dealer. ALUMADOCK also offers Do-It-Yourself kits; your dock is pre-assembled in our factory, broken down, then shipped to your site for you to reassemble.



Facility

Alumadock has a modern manufacturing facility with a 35,000 Sq. Ft. plant and an 8 acre campus. Visitors are welcome for a tour so they can witness our craftsmanship.



Call For A Free Quote
800-849-5511

RM **ROBCO**
MANUFACTURING, INC.

Phone: (252) 438-7399 • Fax: (252) 438-2108
Post Office Box 2600 • Henderson, NC 27536
651 Bearpond Road, Henderson, NC 27537
www.alumadock.com • www.robcomfg.com
Email: sales@alumadock.com