



GOOSE AND THE MONKEY BREWHOUSE IS A 10 BBL BREWHOUSE LOCATED IN THE HISTORIC DEPOT DISTRICT OF LEXINGTON, NC.

GMBH OFFERS A WIDE VARIETY OF DELICIOUS CRAFT BEER BREWED RIGHT HERE IN LEXINGTON.

GMBH IS A GREAT SPOT FOR CRAFT BEER, FOOD AND NIGHT LIFE. CHECK OUR SOCIAL MEDIA FOR FOOD TRUCKS, EVENTS, BEER RELEASES, AND MORE!

For more information on who we are, our beer, and more visit us at www.gooseandthemonkeybrewhouse.com

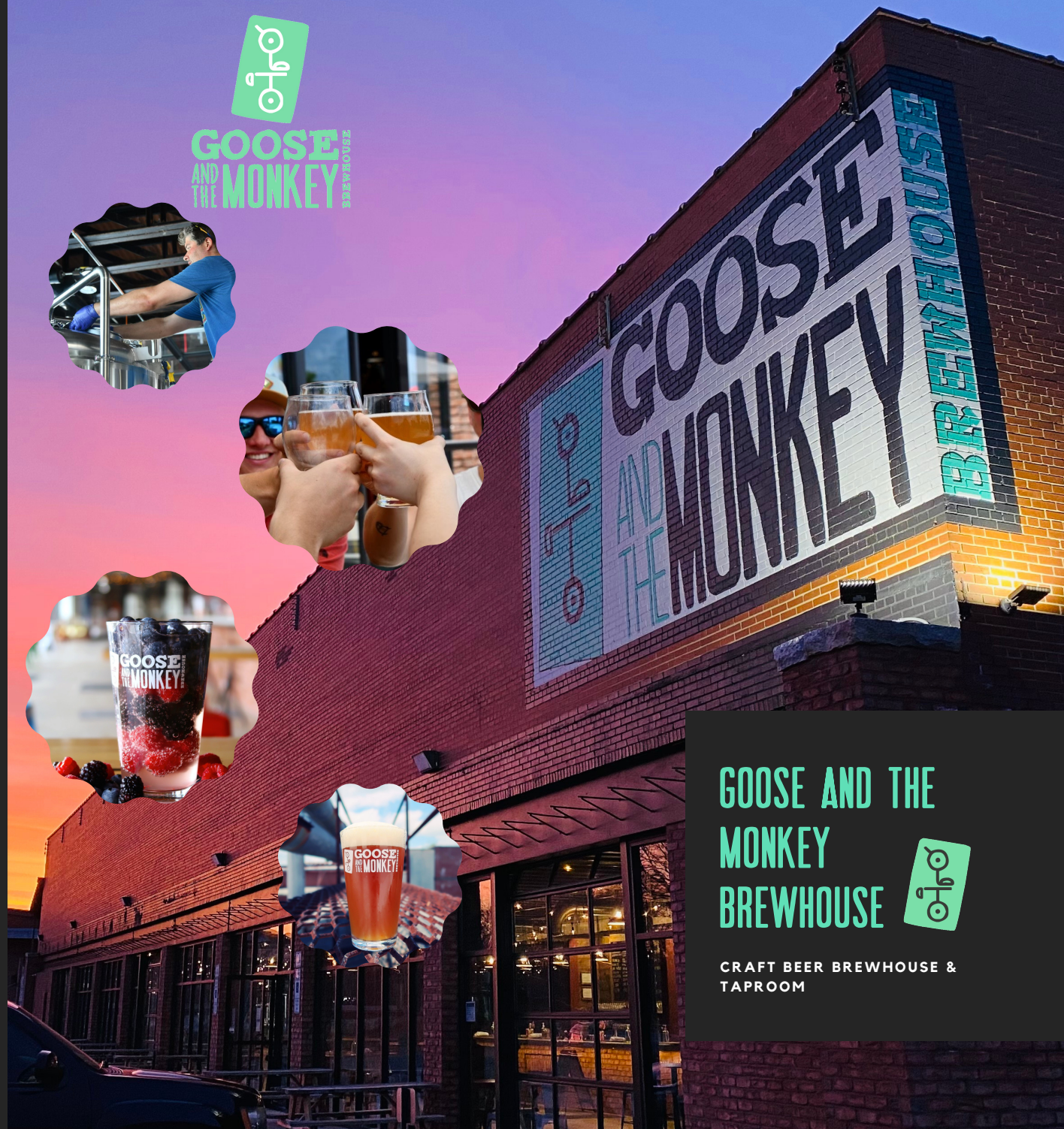
401 S. Railroad St. Lexington, NC 27292
336-239-0206



@gooseandthemonkeybrewhouse



www.facebook.com/gooseandthemonkeybrewhouse



GOOSE AND THE
MONKEY
BREWHOUSE



CRAFT BEER BREWHOUSE &
TAPROOM



401 S. RAILROAD STREET
LEXINGTON, NC 27292

HOURS OF OPERATION:
MONDAY: 9 AM-10 PM
TUESDAY: 9 AM-10 PM
WEDNESDAY: 9 AM-10 PM
THURSDAY: 9 AM-10 PM
FRIDAY: 9 AM -11 PM
SATURDAY: 11 AM-11 PM
SUNDAY: 12-9 PM

